

**ENGINEERED SYSTEMS.  
ENDURING COMFORT.**



[www.a-square.group](http://www.a-square.group)

# BEHIND A-SQUARE



**ALTAF ABDUL**  
Principal Consultant / CEO



**NEHA A**  
EA to CEO



**SWETHA K**  
MEP Team Lead



**REJISHNAV**  
Plumbing Lead



**DANISH ALAM**  
Electrical Lead



**14+**

SECTORS COVERED

**500+**

PROJECTS COMPLETED

**21+**

YEARS OF EXPERIENCE

**9M+**

SQFT COMPLETED



# ABOUT US

We provide professional MEP design and consulting services, applying engineering expertise and systematic methodologies to develop efficient, compliant building systems.

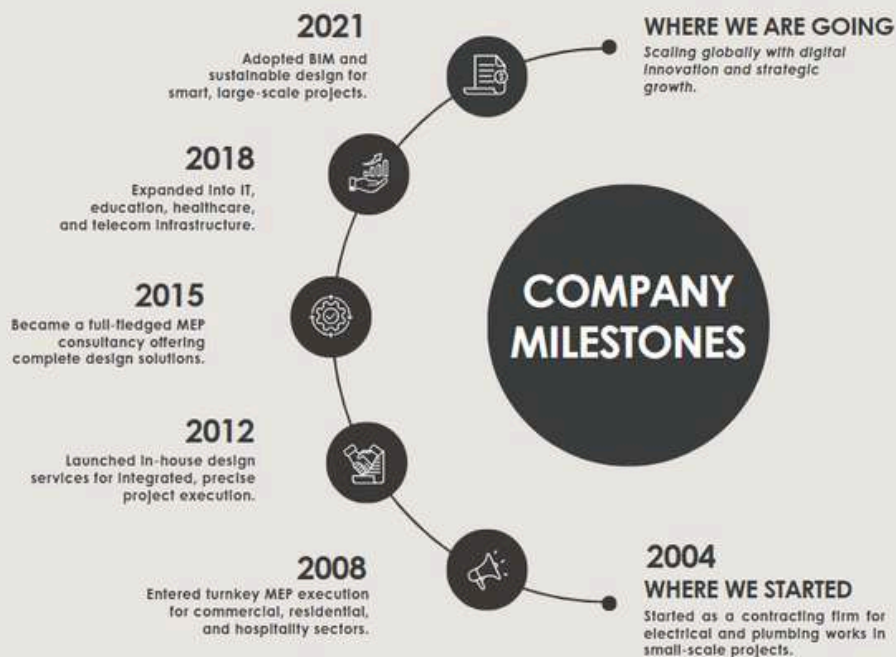
## We offer Design services in

**Electrical Systems** – Complete electrical design including power distribution, lighting systems, emergency backup, and renewable energy integration

**Fire Systems** – Complete fire safety solutions including detection, alarms, sprinklers, suppression systems, and emergency response equipment.

**HVAC Systems** – Energy-efficient heating, ventilation, and air conditioning design with focus on indoor air quality and operational cost reduction.

**Plumbing Systems** – Complete water management systems including potable water, drainage, fire protection, and sustainable water solutions



# CORE PRINCIPLES

## VISION & MISSION

---



Our mission is to create sustainable employment opportunities while delivering technical solutions that serve communities, contributing to economic development through skilled workforce development and equitable business practices.

## CORE PURPOSE

---



To provide engineering solutions to people and organizations to improve their comfort and quality of life.

## CORE VALUES

---



### PROJECT COORDINATION

Open communication and clear processes in every project.



### CODE-COMPLIANT DESIGN

Advanced, professional approaches for evolving industry needs.



### ENGINEERING PROCESS

Solutions engineered for long-term operational value.

# WHY CHOOSE US?

---



## **Documented Track Record**

500+ completed projects across 14 sectors with 21+ years of experience.



## **Field-Tested Expertise**

Our team delivers reliable, cost-effective solutions backed by years of field experience.



## **Code Compliance**

All designs meet local codes and industry regulations through rigorous review and analysis.



## **Requirement-Based Design**

We listen to your needs, provide transparent updates, and deliver results that match your project goals.

# WE DESIGN



## COMMERCIAL COMPLEXES

We design HVAC, electrical, and plumbing systems that optimize performance, meet code requirements, and maintain occupant comfort.

## INTERIOR FIT-OUT SPACES

Our MEP designs integrate seamlessly with architectural plans, delivering safe and efficient building systems that support your space's intended use.



## RESIDENTIAL SPACES

We create comfortable, energy-efficient homes through well-planned HVAC, electrical, and plumbing systems that meet current safety codes.

## RETAIL SPACES

Project-specific designs for retail environments, focusing on lighting, climate control, and power distribution to meet operational requirements and code compliance.





# WE DESIGN



## HOSPITALITY SPACES

MEP designs for hotels and restaurants that prioritize guest comfort while maintaining operational efficiency and code compliance.

## INDUSTRIAL SPACES

Heavy-duty HVAC, electrical, and plumbing systems engineered for manufacturing and warehouse environments with focus on durability and performance.



## QSR SPACES

MEP design for QSR and drive-thru locations, optimizing kitchen ventilation, power distribution, and utility connections.

## LAND INFRASTRUCTURE

Site infrastructure planning including utility routing, stormwater management, and utility connections to support new construction projects.

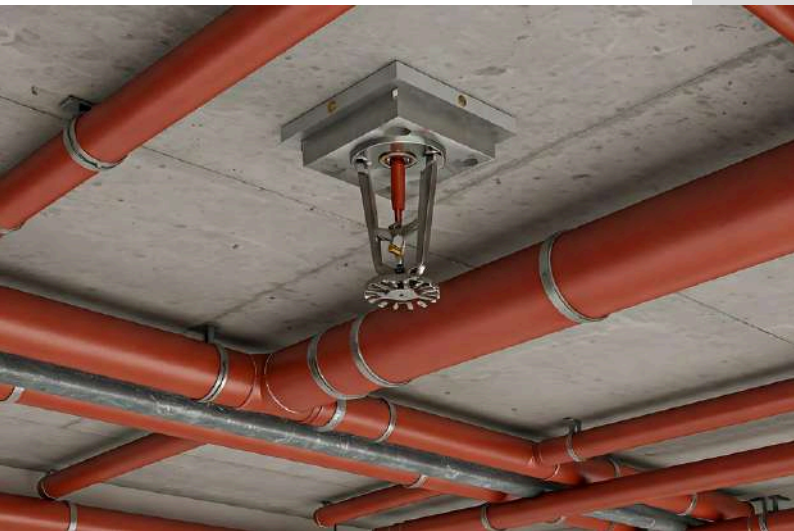




## ELECTRICAL DESIGN

Our electrical designs prioritize safety, code compliance, and operational efficiency.

1. Power distribution and load management
2. Lighting design and automated controls
3. Emergency power and UPS systems
4. Grounding and surge protection



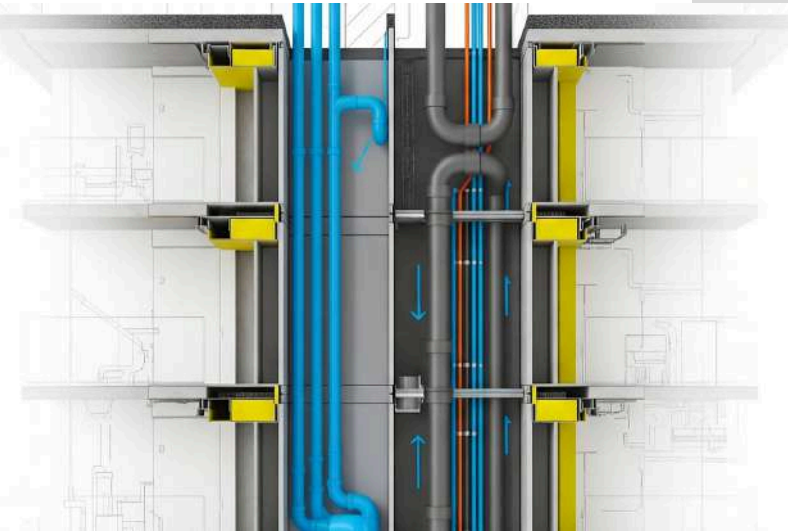
## FIRE DESIGN

We design fire protection systems for early detection, rapid response, and complete building coverage.

1. Fire detection and alarm systems
2. Sprinkler and suppression systems
3. Fire department connections and hydrants
4. Fire pump systems and water storage



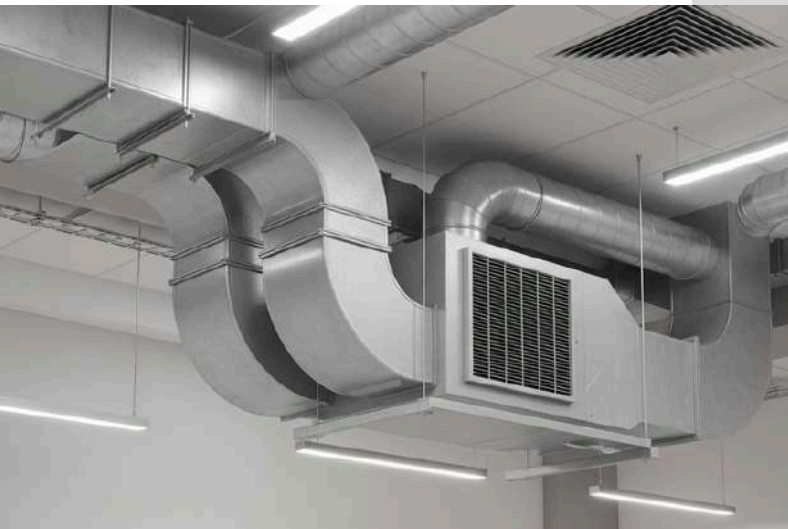
# SERVICES



## PLUMBING DESIGN

We design plumbing systems for water efficiency, code compliance, and long-term performance.

1. Water supply and drainage systems
2. Sewer and waste water management
3. Hot and cold water distribution
4. Plumbing vents and fixture connections



## HVAC DESIGN

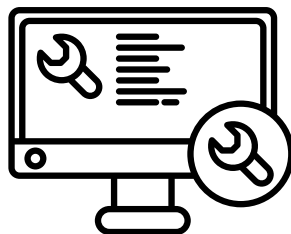
Our HVAC designs focus on energy efficiency, occupant comfort, and system reliability.

1. Central air conditioning systems
2. Ventilation and ductwork design
3. Chiller and boiler installations
4. Humidity and air quality control

# TOOL & TECHNOLOGIES

**Design Software:** We use AutoCAD, Revit, SketchUp, and BIM for precise MEP modeling and coordination. Our 2D/3D modeling capabilities reduce design conflicts and improve project collaboration.

**Analysis Tools:** HAP, Duct Sizer, Dialux, and Pipe Flow Expert software ensure our systems meet performance requirements and code compliance. Microsoft Office handles project documentation and team coordination.



## MEMBER OF

We work with architects, developers, and contractors to integrate MEP systems with overall project requirements. Our network of suppliers and consultants provides specialized expertise and coordination support.



## STANDARDS WE FOLLOW

Our MEP designs comply with national building codes (NBC), international electrical standards (IEC), ASHRAE guidelines for HVAC systems, NFPA fire protection codes, and relevant Indian Standards (IS). We incorporate energy-efficient design principles, proper system integration practices, and comprehensive quality documentation throughout the design process.





# SECTORS DESIGNED

**VIEW**  
Projects List

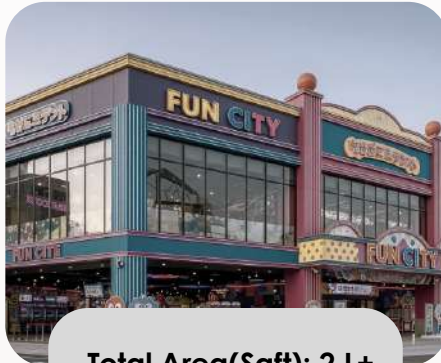


## HEALTH CARE



Total Area(Sqft): 5 L+

## ENTERTAINMENT



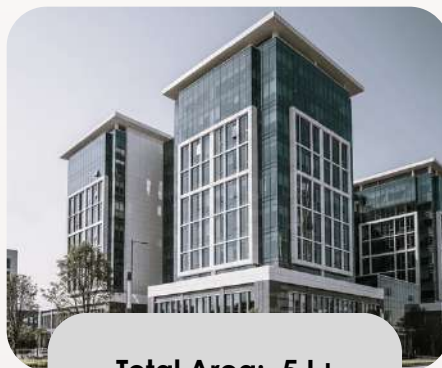
Total Area(Sqft): 2 L+

## R & D LAB



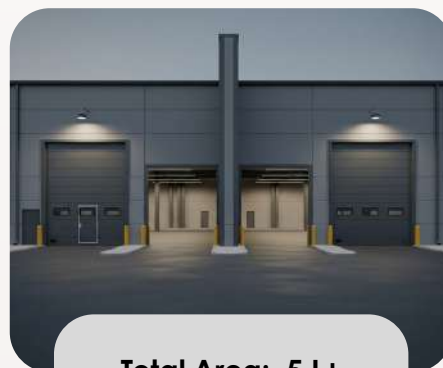
Total Area(Sqft): 1 L+

## SOFTWARE



Total Area: 5 L+

## INDUSTRIAL



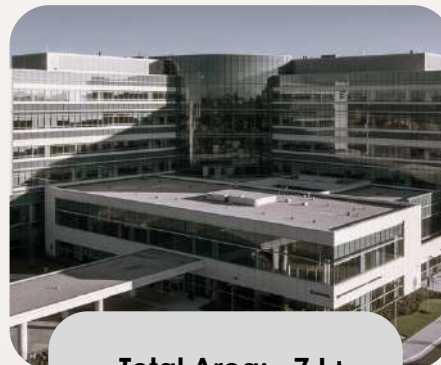
Total Area: 5 L+

## BANKING



Total Area: 3 L+

## RESIDENTIAL



Total Area: 7 L+

## RETAIL



Total Area: 4 L+

# SECTORS DESIGNED

## SOCIAL MEDIA



Total Area(Sqft): 1 L+

## TELECOM



Total Area(Sqft): 1 L+

## EDUCATIONAL



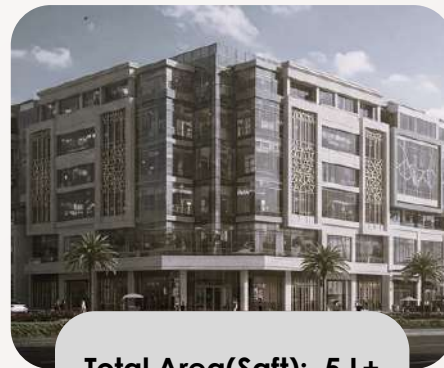
Total Area(Sqft): 2 L+

## HOSPITALITY



Total Area(Sqft): 7 L+

## COMMERCIAL



Total Area(Sqft): 5 L+

## E-COMMERCE



Total Area(Sqft): 3 L+

## FIT-OUT



Total Area(Sqft): 10 L+

## LAND DEVELOPMENT



Total Area: 73+ acres

# MAJOR CLIENTS

MARS

IBM

TATA

DXC  
TECHNOLOGY

JINDAL

LinkedIn

amazon

tcs

fabindia  
CELEBRATE INDIA

Flipkart



DELHIVERY

HSBC

BANK OF AMERICA

KPMG

CBRE

Kempegowda  
INTERNATIONAL  
AIRPORT  
BENGALURU

Global Calcium  
Adding life to life

target  
software

eurofins

THE  
RAMESHWARAM  
CAFE

POSTA  
STREET  
RISTORANTE ITALIANO

loopworm

BOROSIL®

TVS



ZUARI

hp





# MAJOR CLIENTS

 **accenture**

  
**SevenHills**  
HOSPITAL  
*Within your reach*

  
Confluence

  
FERRERO  
ROCHER

  
Colliers

  
**FUN CITY**  
COME, PLAY!



  
HDFC BANK

**ThermoFisher**  
SCIENTIFIC

## ARCHITECTS & BUILDERS

DESIGNBOULEVARD



  
VIVOSPACE  
ARCHITECTS

  
ABD GROUP  
*Rise and Shine*

**Matthews  
Architects**

 **Innobuild**

adrianse\*

  
**amaze**  
Fit-out | MEP | Design + Build

  
**ARH**  
ARCHITECT RUSHIKESH.H

  
**ONE STOREY**  
- Architecture | Interior Design -

**CnT**  
Architects  
Enrich Life through Architecture

  
ROYAL  
INDRAPRASTHA  
BUILDERS  
QUALITY. REDEFINED

  
**ymn**  
design  
studio

  
**GREENDOOR**  
design studio

  
**SATTVA**  
TRUST, IT'S WHAT WE BUILD.



## A-SQUARE MEP CONSULTANTS



### HEAD-OFFICE

1st Floor APR & MRS Arcade, Devanahalli  
Bengaluru, India- 562110.



+91 80-25577224



operations@a-square.group



+91 88675 03964 / +91 98452 08299



### MYSORE

leena@a-square.co

+91 93537 12971



### CHENNAI

rejishnav@a-square.co

+91 7619327976



### MUMBAI/PUNE/GOA

anish@a-square.co

+91 9900865649



### KERALA

swethak@a-square.co

+91 7337730963



### HYDERABAD

neha@a-square.co

+91 99000 77722