



1st Floor, APP & MRS ARCADE,
Vijayapura Road, Devanahalli,
BENGALURU INDIA , 562110

A-SQUARE MEP Consultants (hereafter referred to as "A-SQUARE") retains all copyright and other proprietary rights to the drawings created by A-SQUARE. All drawings created by A-SQUARE are protected by Indian and international copyright laws. Any unauthorized reproduction, distribution, or modification of A-SQUARE's drawings is strictly prohibited. A-SQUARE reserves the right to take legal action against any unauthorized use of its drawings. A-SQUARE grants clients a limited, non-exclusive, non-transferable license to use the drawings for the specific project or purpose for which they were created. Clients may not use the drawings for any other purpose without the express written consent of A-SQUARE. Clients may not modify, reproduce, distribute, transmit, display, perform, publish, license, create derivative works from, transfer, or sell any of A-SQUARE's drawings without the prior written consent of A-SQUARE. Clients may not use any of A-SQUARE's drawings as a basis for the design or construction of any other project without the express written consent of A-SQUARE. Clients may not disclose any of A-SQUARE's drawings to any third party without the prior written consent of A-SQUARE. Kindly visit our web-site, to know more.

GENERAL NOTES

- All dimensions are in millimeters (mm); follow written dimensions, do not scale.
- Drawings must be coordinated across all disciplines; report discrepancies before execution.
- Designs comply with NBC, ASHRAE, NEC, IPS, and other applicable architectural & MEP standards.
- Use only the latest issued drawings; verify all dimensions and site conditions before execution.

VERSION CHART

VERSION NO.	VERSION DATE
REF-01	09-JUN-2025
FINAL APPROVAL-01	27-JUN-2025
FINAL APPROVAL-02	02-JUL-2025
FINAL APPROVAL-03	04-JUL-2025
GFC	07-JUL-2025

LOCATION:
GEMINI INFRASTRUCTURE
AT SURVEY NO. 29/2, 29/4, 29/8, 30/2, & 30/3 AT
HUSKUR ROAD, VADARAHALLI VILLAGE,
DASANPURA HOBLI, BANGALORE NORTH
TALUK, NELAMANGALA-562123

PROJECT:
WEIR MINERALS PLANT-2

CLIENT:

WEIR MINERALS INDIA PRIVATE LIMITED

ISSUED FOR:

1st Floor, APP & MRS ARCADE, Vijayapura Road, Devanahalli, Bangalore -562110
 www.a-square.in@gmail.com

ISSUED DATE:
07-JUL-2025

DRAWN BY: DA

CHECKED BY: SK

APPROVED BY: AA

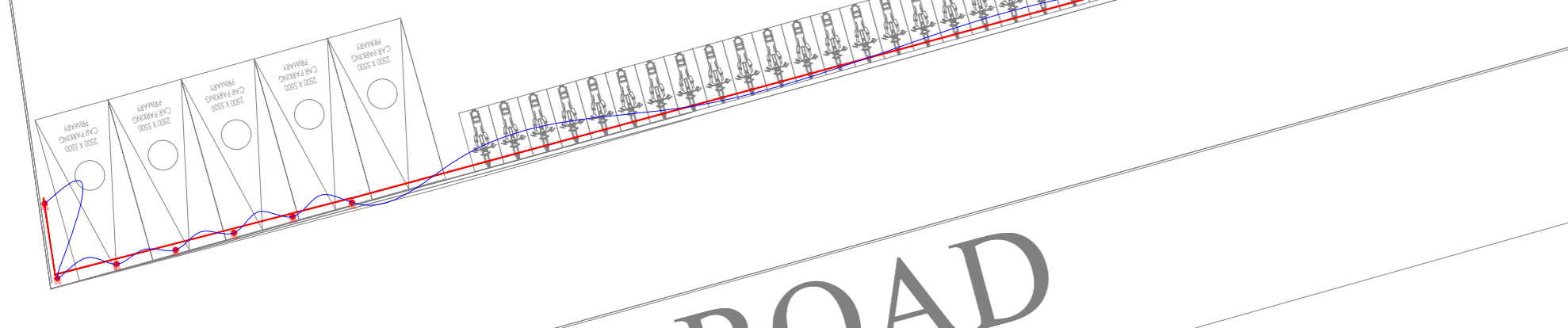
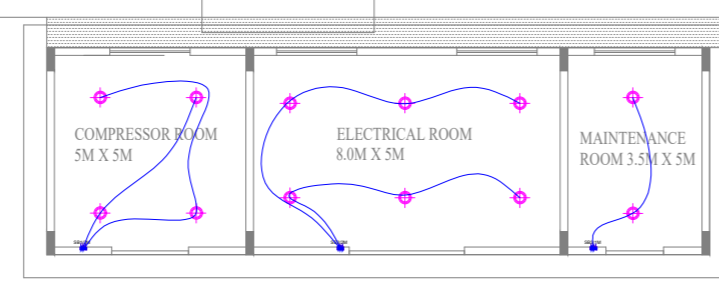
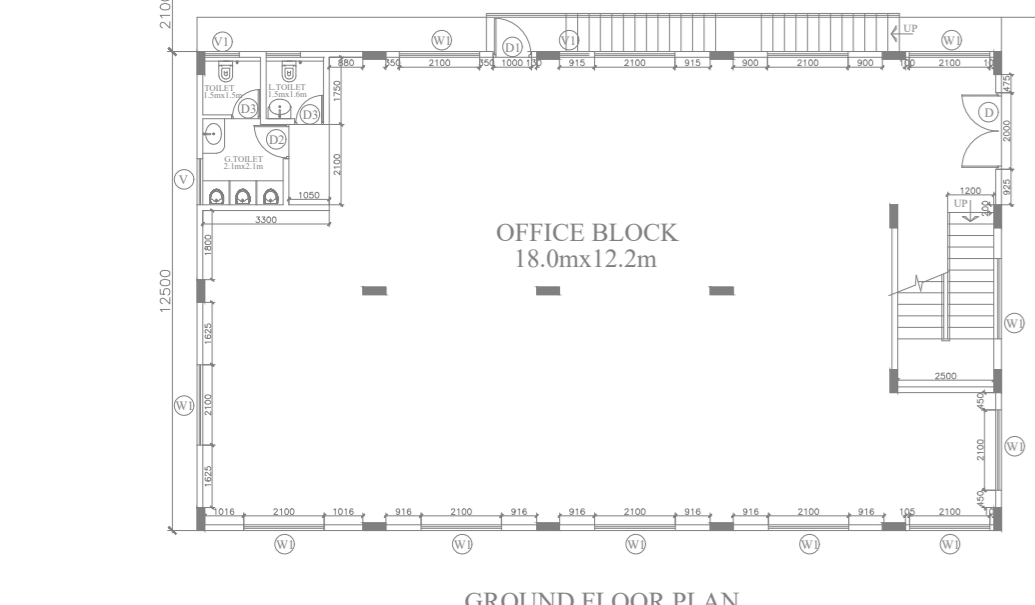
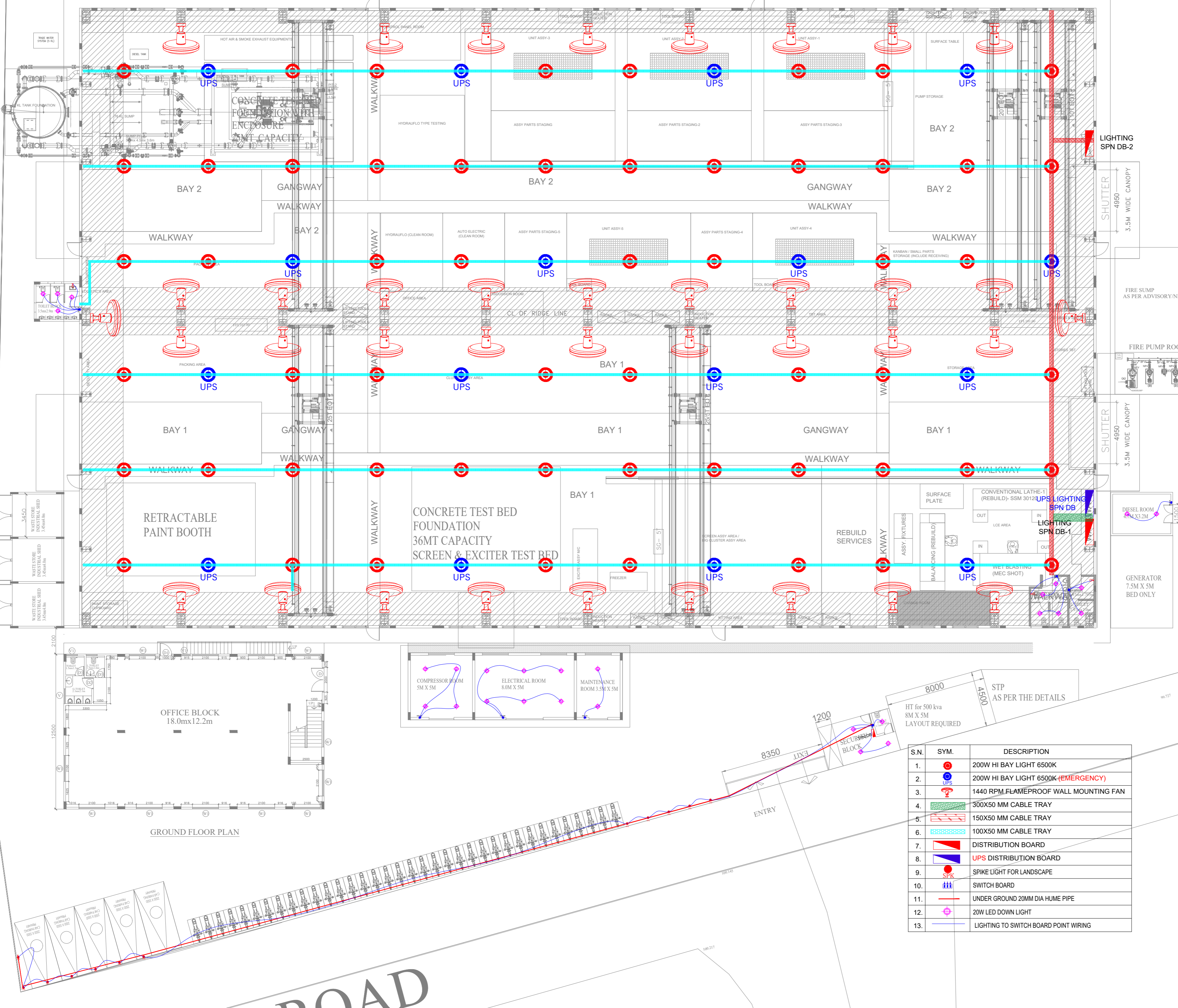
SHEET TITLE:

LIGHTING LAYOUT

SHEET SIZE: A2

DRAWING NO:

ASC-ELE-WM-001





1st Floor, APP & MRS ARCADE,
Vijayapura Road, Devanahalli,
BENGALURU INDIA , 562110

A-SQUARE MEP Consultants (hereafter referred to as "A-SQUARE") retains all copyright and other proprietary rights to the drawings created by A-SQUARE. All drawings created by A-SQUARE are protected by Indian and international copyright laws. Any unauthorized reproduction, distribution, or modification of A-SQUARE's drawings is strictly prohibited. A-SQUARE reserves the right to take legal action against any unauthorized use of its drawings. A-SQUARE grants clients a limited, non-exclusive, non-transferable license to use the drawings for the specific project or purpose for which they were created. Clients may not use the drawings for any other purpose without the express written consent of A-SQUARE. Clients may not modify, reproduce, distribute, transmit, display, perform, publish, license, create derivative works from, transfer, or sell any of A-SQUARE's drawings without the prior written consent of A-SQUARE. Clients may not use any of A-SQUARE's drawings as a basis for the design or construction of any other project without the express written consent of A-SQUARE. Clients may not disclose any of A-SQUARE's drawings to any third party without the prior written consent of A-SQUARE. Kindly visit our web-site, to know more.

GENERAL NOTES

- All dimensions are in millimeters (mm); follow written dimensions, do not scale.
- Drawings must be coordinated across all disciplines; report discrepancies before execution.
- Designs comply with NBC, ASHRAE, NEC, IPS, and other applicable architectural & MEP standards.
- Use only the latest issued drawings; verify all dimensions and site conditions before execution.

VERSION CHART

VERSION NO.	VERSION DATE
REF-01	09-JUN-2025
FINAL APPROVAL-01	27-JUN-2025
FINAL APPROVAL-02	02-JUL-2025
FINAL APPROVAL-03	04-JUL-2025
GFC	07-JUL-2025

LOCATION:
GEMINI INFRASTRUCTURE
AT SURVEY NO. 29/2, 29/4, 29/8, 30/2, & 30/3 AT
HUSKUR ROAD, VADARAHALLI VILLAGE,
DASANPURA HOBLI, BANGALORE NORTH
TALUK, NELAMANGALA-562123

PROJECT:
WEIR MINERALS PLANT-2

CLIENT:

WEIR MINERALS INDIA PRIVATE LIMITED

ISSUED FOR:



1st Floor, APP & MRS ARCADE, Vijayapura Road, Devanahalli, Bangalore -562110

ISSUED DATE:
07-JUL-2025

DRAWN BY: SK

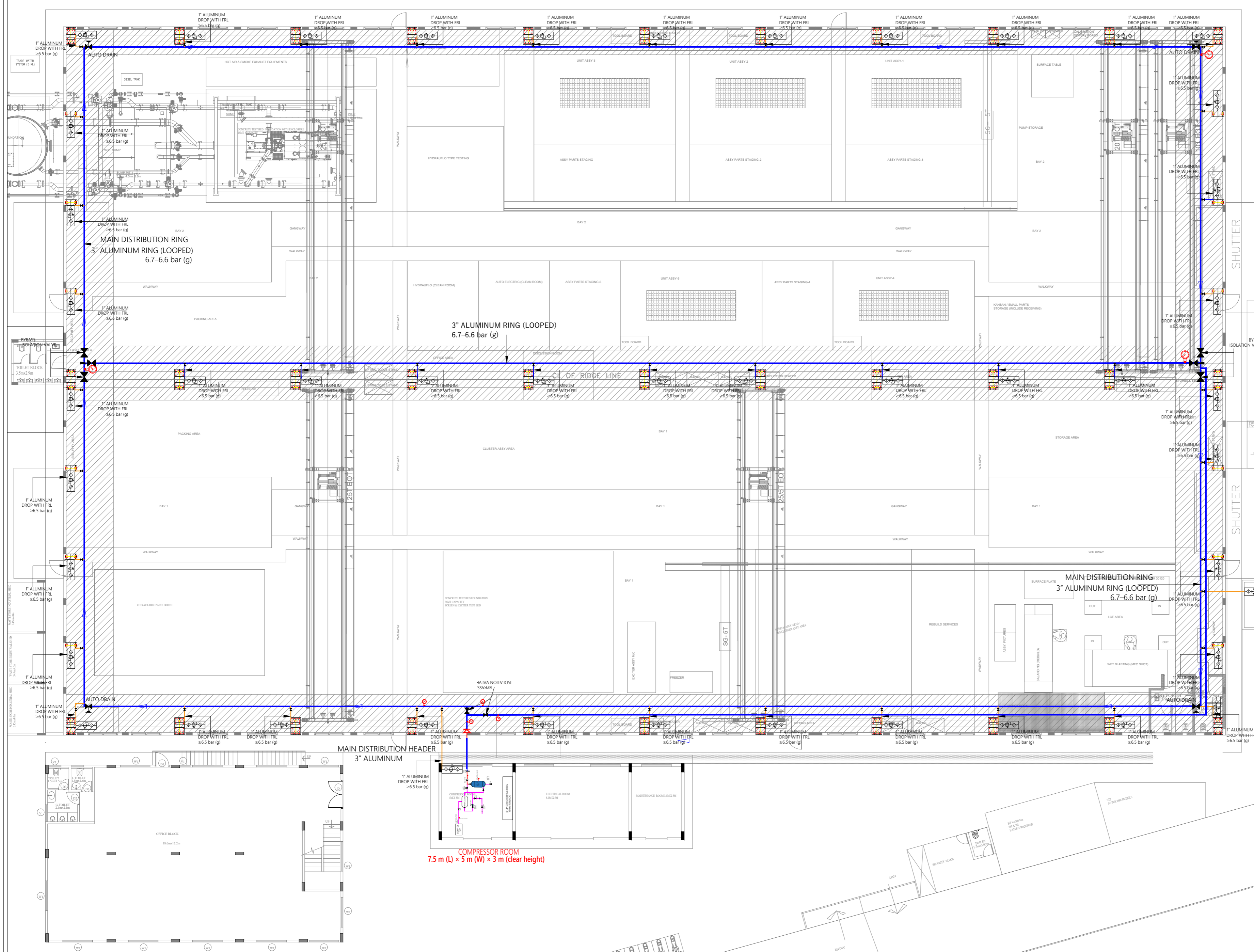
CHECKED BY: SK

APPROVED BY: AA

SHEET TITLE:
**PLANT LAYOUT
COMPRESSED AIR DISTRIBUTION**

SHEET SIZE: A2

DRAWING NO: ASC-CAD-WM-001





1st Floor, APR & MRS ARCADE,
Vijayapura Road, Devanahalli,
BENGALURU INDIA , 562110

A-SQUARE MEP Consultants (hereafter referred to as "A-SQUARE") retains all copyright and other proprietary rights to the drawings created by A-SQUARE. All drawings created by A-SQUARE are protected by Indian and International copyright laws. Any unauthorized reproduction, distribution, or modification of A-SQUARE's drawings is strictly prohibited. A-SQUARE reserves the right to take legal action against any unauthorized use of its drawings. A-SQUARE grants clients a limited, non-exclusive, non-transferable license to use the drawings for the specific project or purpose for which they were created. Clients may not use the drawings for any other purpose without the express written consent of A-SQUARE. Clients may not modify, reproduce, distribute, transmit, display, perform, publish, license, create derivative works from, transfer, or sell any of A-SQUARE's drawings without the prior written consent of A-SQUARE. Clients may not use any of A-SQUARE's drawings as a basis for the design or construction of any other project without the express written consent of A-SQUARE. Clients may not disclose any of A-SQUARE's drawings to any third party without the prior written consent of A-SQUARE. Kindly visit our web-site, to know more.

GENERAL NOTES

- All dimensions are in millimeters (mm); follow written dimensions, do not scale.
- Drawings must be coordinated across all disciplines; report discrepancies before execution.
- Designs comply with NBC, ASHRAE, NEC, IPS, and other applicable architectural & MEP standards.
- Use only the latest issued drawings; verify all dimensions and site conditions before execution.

VERSION CHART

VERSION NO.	VERSION DATE
REF-01	09-JUN-2025
FINAL APPROVAL-01	27-JUN-2025
FINAL APPROVAL-02	02-JUL-2025
FINAL APPROVAL-03	04-JUL-2025
GFC	07-JUL-2025

LOCATION:
GEMINI INFRASTRUCTURE
AT SURVEY NO. 29/2, 29/4, 29/8, 30/2, & 30/3 AT
HUSKUR ROAD, VADARAHALLI VILLAGE,
DASANPURA HOBLI, BANGALORE NORTH
TALUK, NELAMANGALA-562123

PROJECT:
WEIR MINERALS PLANT-2

CLIENT:
WEIR
WEIR MINERALS INDIA PRIVATE LIMITED

ISSUED FOR:

1st Floor, APR & MRS ARCADE, Vijayapura Road, Devanahalli, Bangalore -562110

ISSUED DATE:
07-JUL-2025

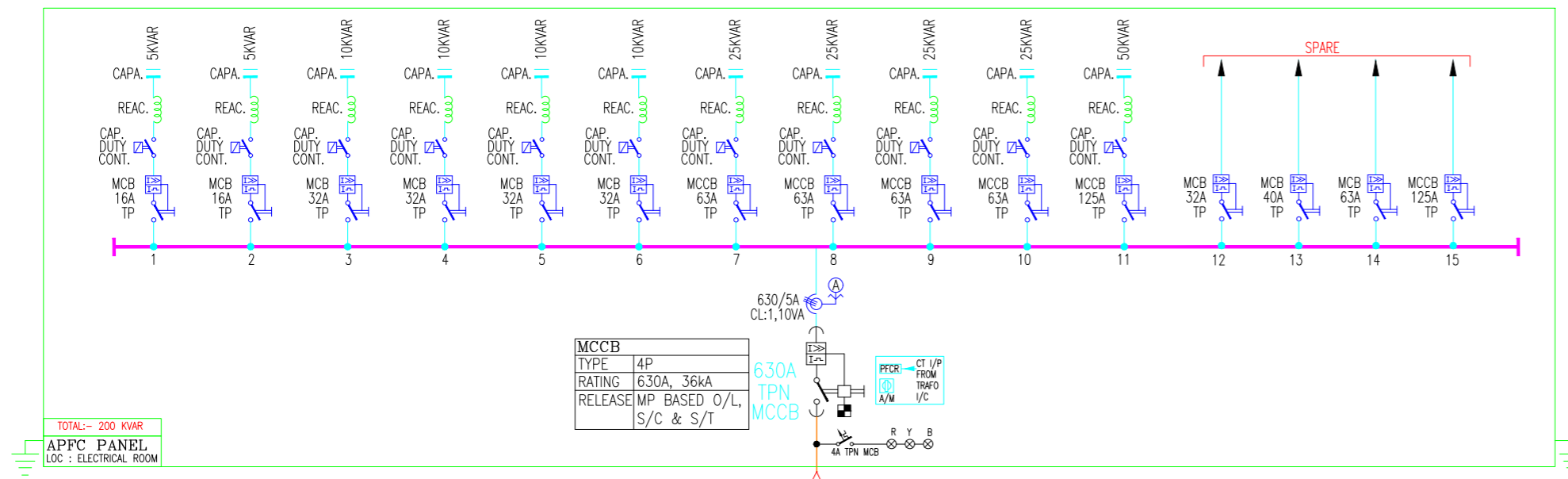
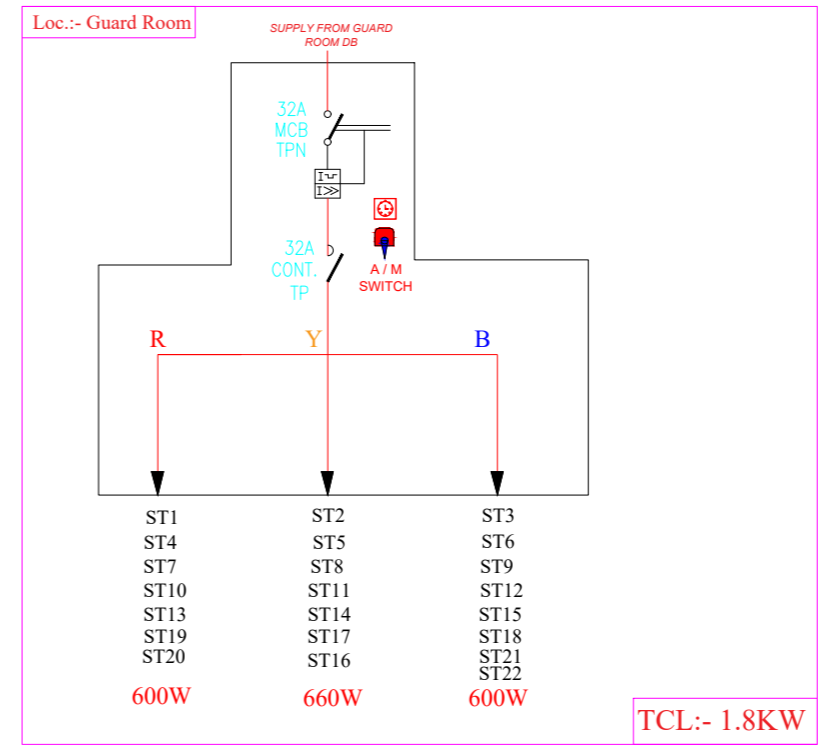
DRAWN BY: **DA**
CHECKED BY: **SK**
APPROVED BY: **AA**

SHEET TITLE:
MAIN PANEL & APFC PANEL SLD

SHEET SIZE: **A2**

DRAWING NO:
ASC-ELE-WM-004

STREET LIGHT CONTROL PANEL



MCCB	TYPE: 4P
	RATING: 630A, 36kA
	RELEASE: MP BASED O/L, S/C & S/T

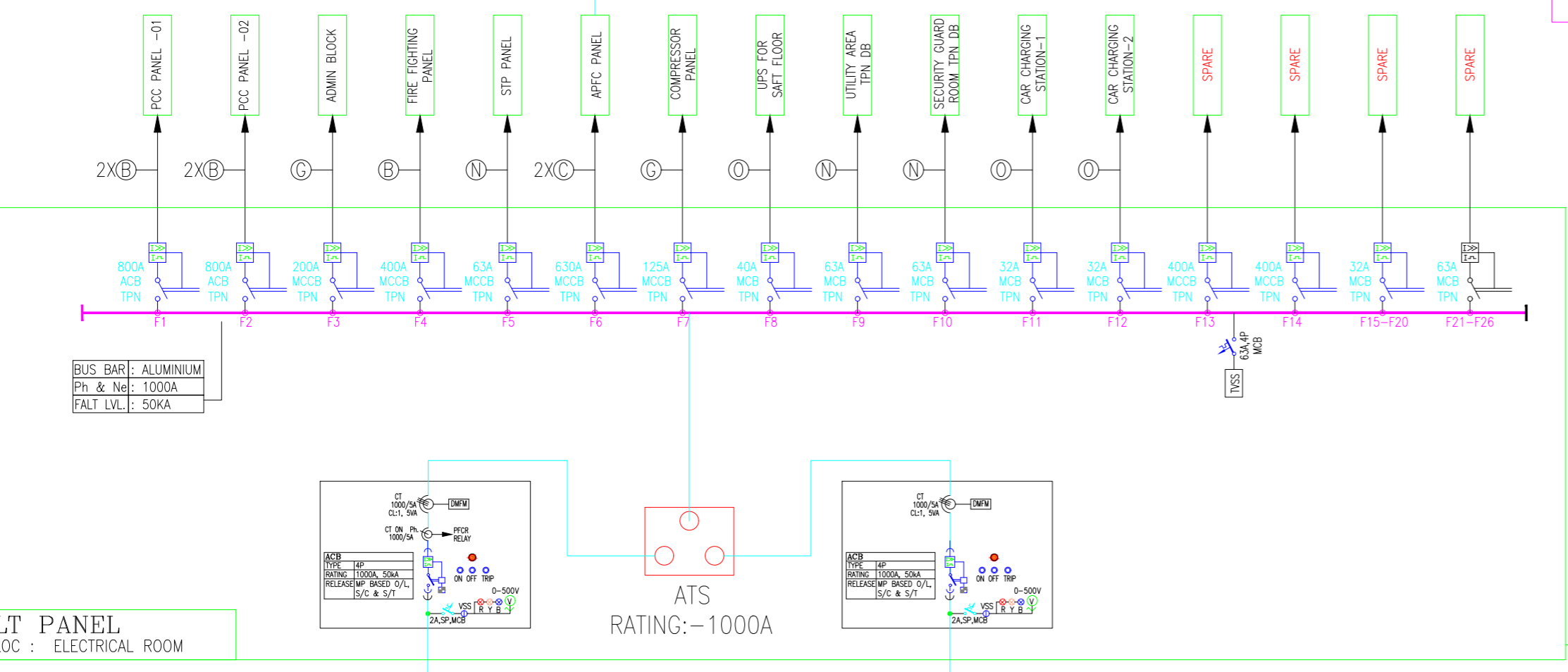
TOTAL:- 200 KWAR
APFC PANEL
LOC: ELECTRICAL ROOM

LEGEND AND ABBREVIATIONS.

	MOULDED CASE CIRCUIT BREAKER (MCCB)
	CURRENT TRANSFORMER (CT) RESIN CAST
	VOLTMETER WITH SELECTOR SWITCH (DIGITAL)
	EMERGENCY SWITCH
	PHASE FAILURE RELAY OVER AND UNDER VOLTAGE PROTECTION RELAY (PFR)
	MINIATURE CIRCUIT BREAKER (MCB)/MCCB
	INDICATING LAMP (R,Y,B)
	DIGITAL MULTI FUNCTION METER(V,I,R,KW etc.)
	AUTOMATIC MAINS FAILURE PANEL
	TIMER
	AUTO MANUAL SWITCH

CABLE LEGEND

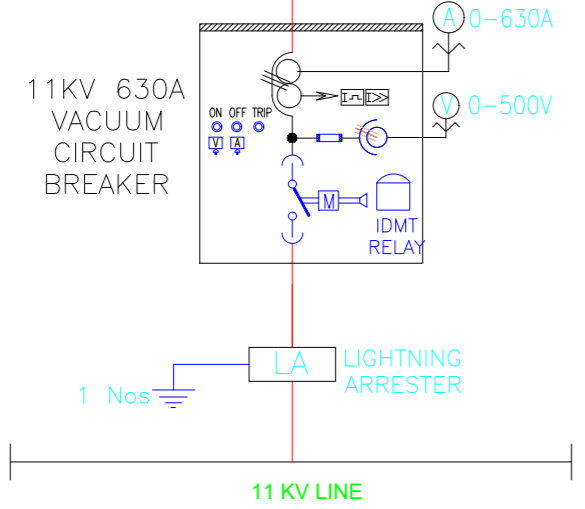
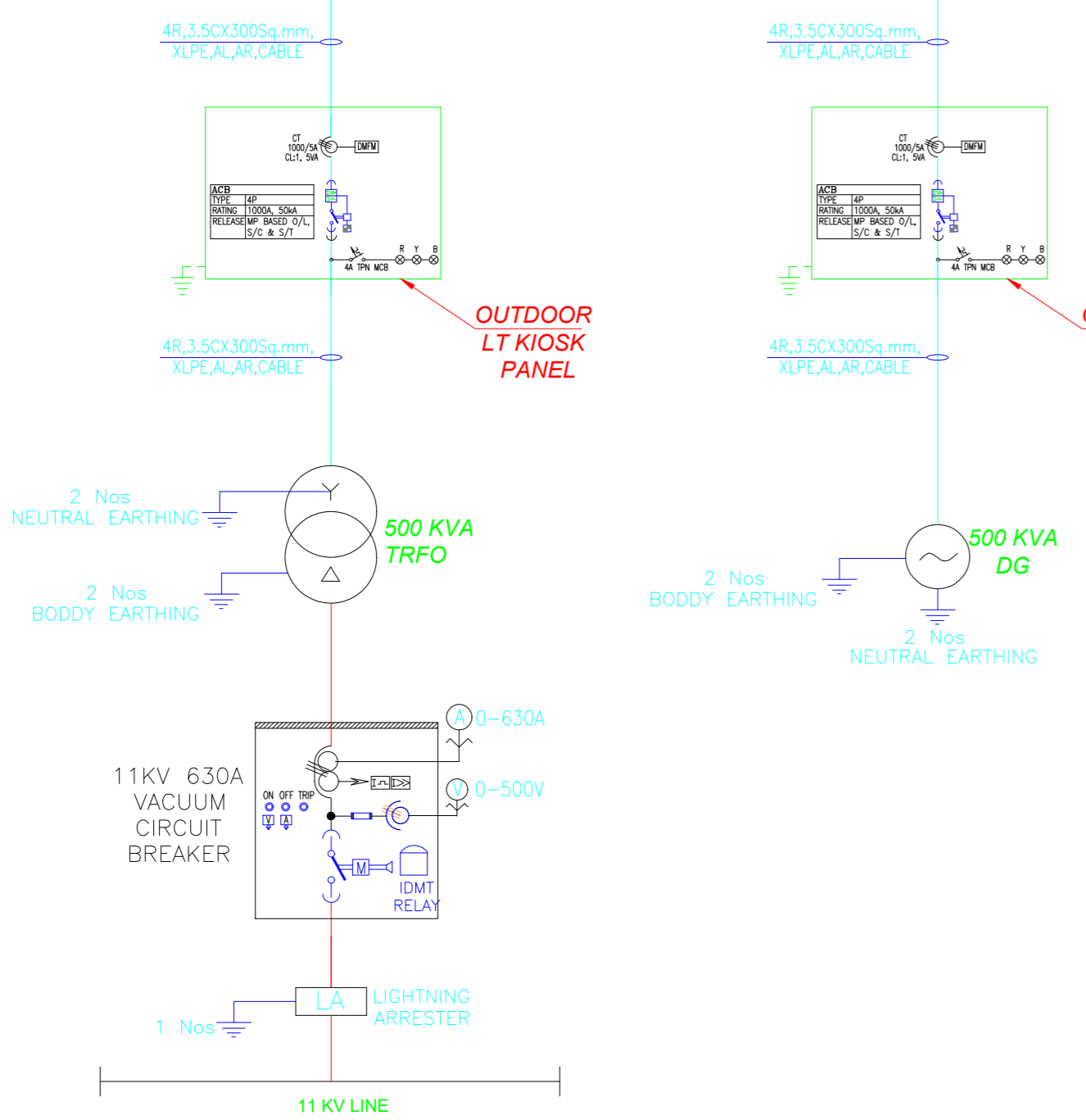
(A)	3.5CX300 SQMM AL,XLPE,AR,CABLE
(B)	3.5CX240 SQMM AL,XLPE,AR,CABLE
(C)	3.5CX185 SQMM AL,XLPE,AR,CABLE
(D)	3.5CX150 SQMM AL,XLPE,AR,CABLE
(E)	3.5CX120 SQMM AL,XLPE,AR,CABLE
(F)	3.5CX95 SQMM AL,XLPE,AR,CABLE
(G)	3.5CX70 SQMM AL,XLPE,AR,CABLE
(H)	3.5CX50 SQMM AL,XLPE,AR,CABLE
(I)	3.5CX35 SQMM AL,XLPE,AR,CABLE
(K)	3.5CX25 SQMM AL,XLPE,AR,CABLE
(L)	3CX10 SQMM AL,XLPE,AR,CABLE
(M)	4CX16 SQMM AL,XLPE,AR,CABLE
(N)	4CX10 SQMM AL,XLPE,AR,CABLE
(O)	4CX6 SQMM AL,XLPE,AR,CABLE



BUS BAR: ALUMINIUM
Ph & Nel: 1000A
FALT LVL: 50KA

LT PANEL
LOC: ELECTRICAL ROOM

ATS
RATING:- 1000A





1st Floor, APR & MRS ARCADE,
Vijayapura Road, Devanahalli,
BENGALURU INDIA , 562110

A-SQUARE MEP Consultants (hereafter referred to as "A-SQUARE") retains all copyright and other proprietary rights to the drawings created by A-SQUARE. All drawings created by A-SQUARE are protected by Indian and international copyright laws. Any unauthorized reproduction, distribution, or modification of A-SQUARE's drawings is strictly prohibited. A-SQUARE reserves the right to take legal action against any unauthorized use of its drawings. A-SQUARE grants clients a limited, non-exclusive, non-transferable license to use the drawings for the specific project or purpose for which they were created. Clients may not use the drawings for any other purpose without the express written consent of A-SQUARE. Clients may not modify, reproduce, distribute, transmit, display, perform, publish, license, create derivative works from, transfer, or sell any of A-SQUARE's drawings without the prior written consent of A-SQUARE. Clients may not use any of A-SQUARE's drawings as a basis for the design or construction of any other project without the express written consent of A-SQUARE. Clients may not disclose any of A-SQUARE's drawings to any third party without the prior written consent of A-SQUARE. Kindly visit our web-site, to know more.

GENERAL NOTES

- All dimensions are in millimeters (mm); follow written dimensions, do not scale.
- Drawings must be coordinated across all disciplines; report discrepancies before execution.
- Designs comply with NBC, ASHRAE, NEC, IPS, and other applicable architectural & MEP standards.
- Use only the latest issued drawings; verify all dimensions and site conditions before execution.

VERSION CHART

VERSION NO.	VERSION DATE
REF-01	09-JUN-2025
FINAL APPROVAL-01	27-JUN-2025
FINAL APPROVAL-02	02-JUL-2025
FINAL APPROVAL-03	04-JUL-2025
GFC	07-JUL-2025

LOCATION:
GEMINI INFRASTRUCTURE
AT SURVEY NO. 29/2, 29/4, 29/8, 30/2, & 30/3 AT
HUSKUR ROAD, VADARAHALLI VILLAGE,
DASANPURA HOBLI, BANGALORE NORTH
TALUK, NELAMANGALA-562123

PROJECT:
WEIR MINERALS PLANT-2

CLIENT:

WEIR MINERALS INDIA PRIVATE LIMITED

ISSUED FOR:

1st Floor, APR & MRS ARCADE, Vijayapura Road, Devanahalli, Bangalore -562110

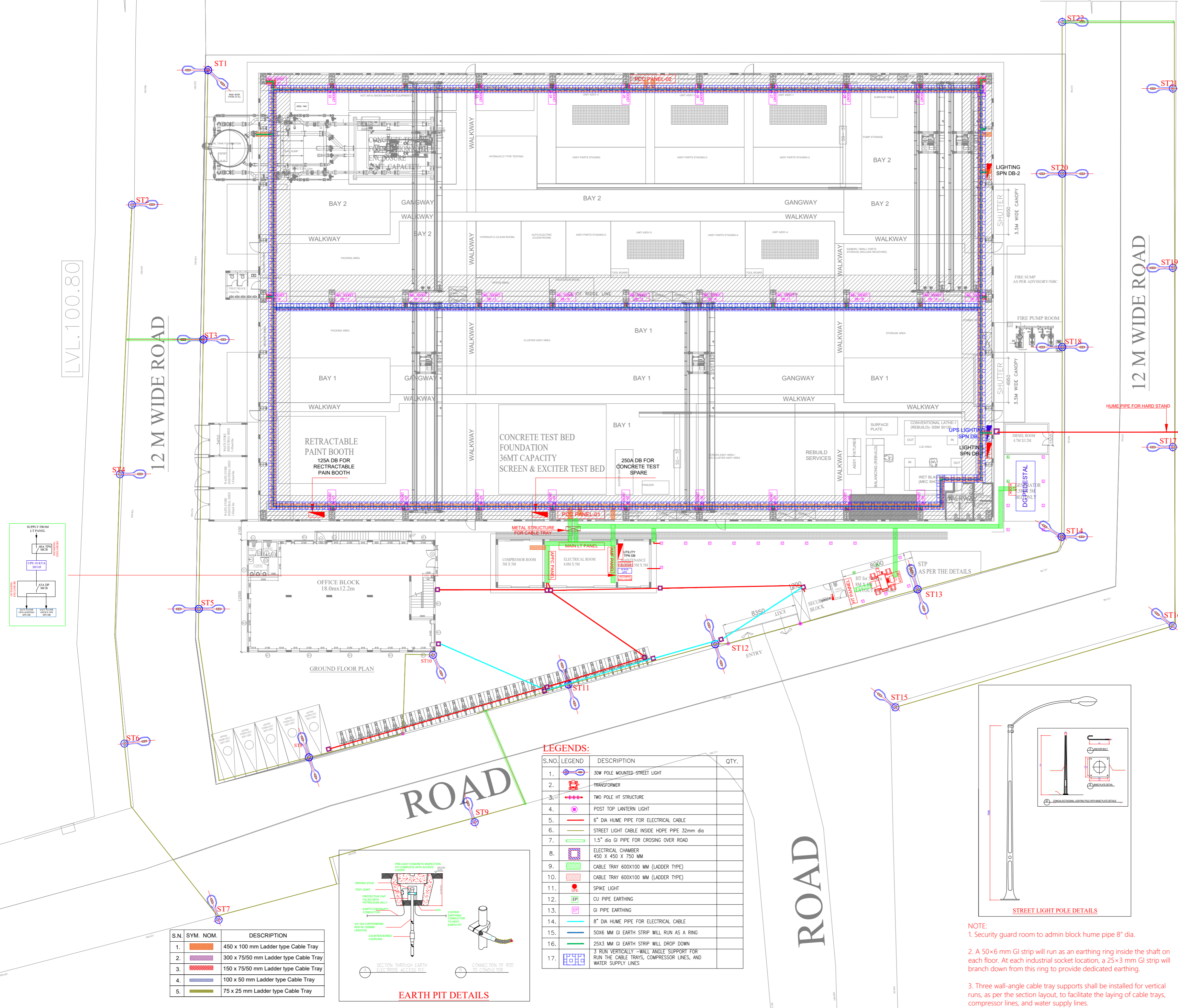
ISSUED DATE:
07-JUL-2025

DRAWN BY: DA
CHECKED BY: SK
APPROVED BY: AA

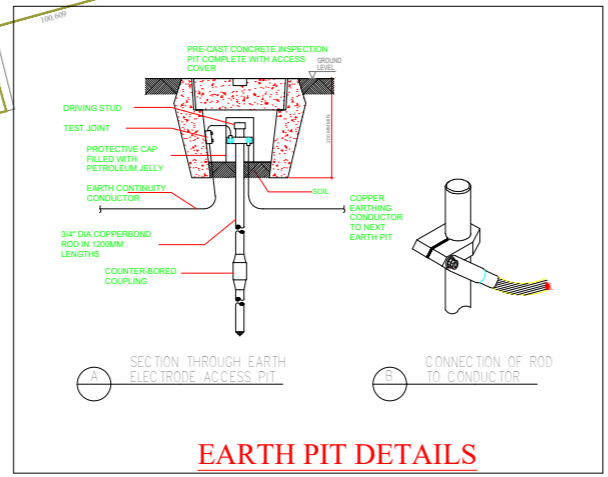
SHEET TITLE:
POWER & DB & EXTERNAL LIGHTING & PANEL LAYOUT

SHEET SIZE: A2

DRAWING NO: ASC-ELE-WM-002

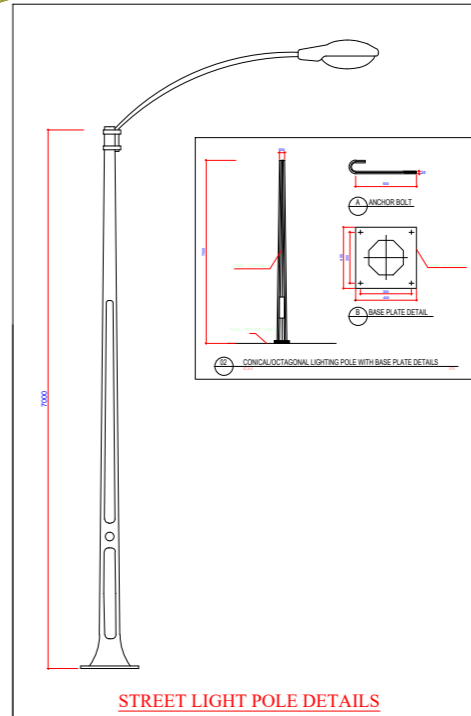


S.N.	SYM. NOM.	DESCRIPTION
1.	[Symbol]	450 x 100 mm Ladder type Cable Tray
2.	[Symbol]	300 x 75/50 mm Ladder type Cable Tray
3.	[Symbol]	150 x 75/50 mm Ladder type Cable Tray
4.	[Symbol]	100 x 50 mm Ladder type Cable Tray
5.	[Symbol]	75 x 25 mm Ladder type Cable Tray













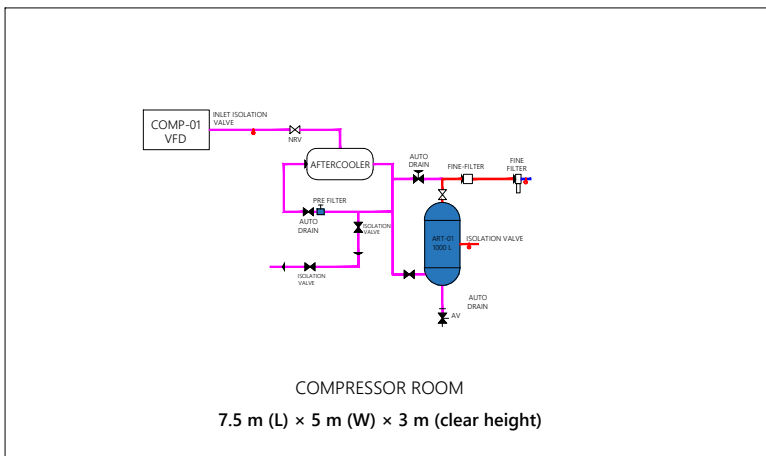
LEGENDS:

S.NO.	LEGEND	DESCRIPTION	QTY.
1.	[Symbol]	30W POLE MOUNTED-STREET LIGHT	
2.	[Symbol]	TRANSFORMER	
3.	[Symbol]	TWO POLE HT STRUCTURE	
4.	[Symbol]	POST TOP LANTERN LIGHT	
5.	[Symbol]	6" DIA HUMM PIPE FOR ELECTRICAL CABLE	
6.	[Symbol]	STREET LIGHT CABLE INSIDE HDPE PIPE 32mm dia	
7.	[Symbol]	1.5" dia GI PIPE FOR CROSSING OVER ROAD	
8.	[Symbol]	ELECTRICAL CHAMBER 450 X 450 X 750 MM	
9.	[Symbol]	CABLE TRAY 600X100 MM (LADDER TYPE)	
10.	[Symbol]	CABLE TRAY 600X100 MM (LADDER TYPE)	
11.	[Symbol]	SPIKE LIGHT	
12.	[Symbol]	CU PIPE EARTHING	
13.	[Symbol]	GI PIPE EARTHING	
14.	[Symbol]	8" DIA HUMM PIPE FOR ELECTRICAL CABLE	
15.	[Symbol]	50X6 MM GI EARTH STRIP WILL RUN AS A RING	
16.	[Symbol]	25X3 MM GI EARTH STRIP WILL DROP DOWN	
17.	[Symbol]	3" RUN VERTICALLY -WALL ANGLE SUPPORT FOR RUN THE CABLE TRAYS, COMPRESSOR LINES, AND WATER SUPPLY LINES	



- NOTE:**
- Security guard room to admin block hume pipe 8" dia.
 - A 50x6 mm GI strip will run as an earthing ring inside the shaft on each floor. At each industrial socket location, a 25x3 mm GI strip will branch down from this ring to provide dedicated earthing.
 - Three wall-angle cable tray supports shall be installed for vertical runs, as per the section layout, to facilitate the laying of cable trays, compressor lines, and water supply lines.

	3" Pipe Line
	2.5" Pipe Line
	2" Pipe Line
	1.5" Pipe Line
	1" Pipe Line
	1/2" Pipe Drop
	Ball Valve
	NRV Valve
	FRL
	PRESSURE GAUGE/SENSOR

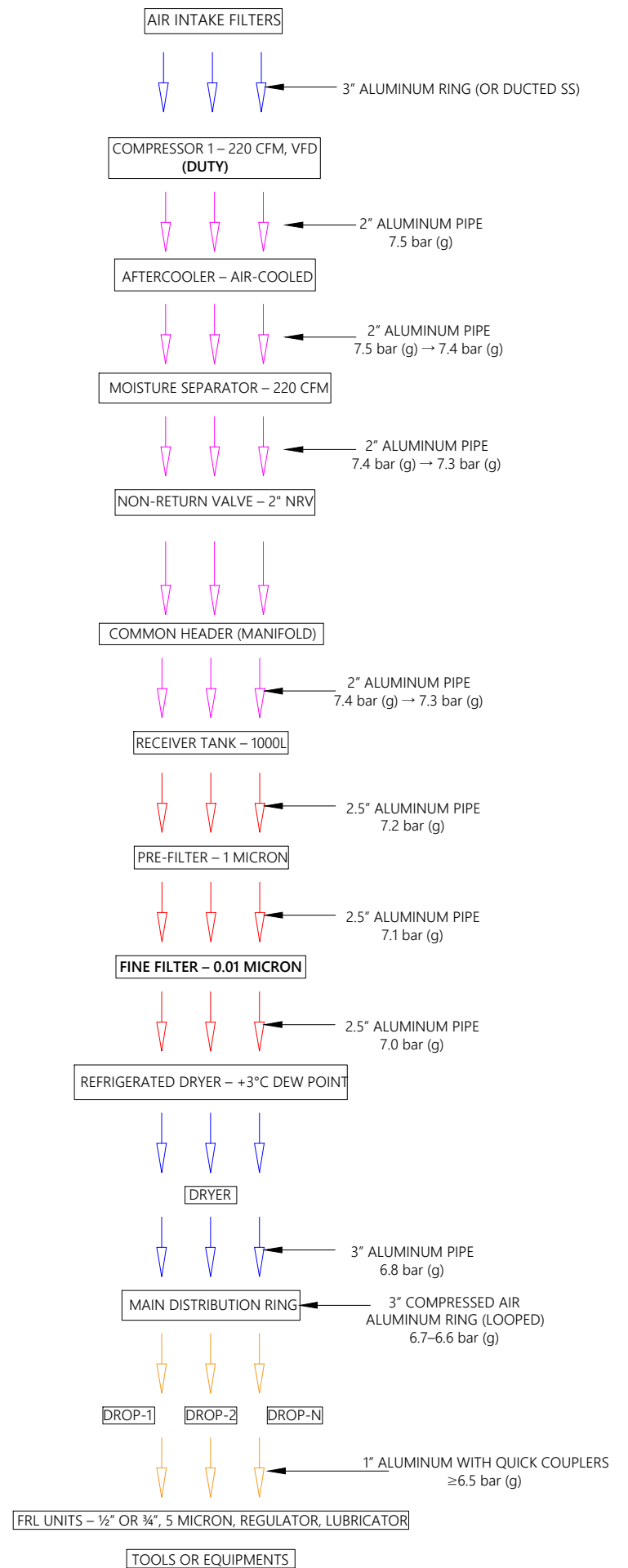


GENERAL NOTES – COMPRESSED AIR SYSTEM

(220 CFM @ 6.5 bar(g)):-

1. THE SYSTEM IS DESIGNED FOR A TOTAL LOAD OF 220 CFM AT 6.5 BAR(G).
2. COMPRESSED AIR IS GENERATED BY 1 NOS. VFD-BASED ROTARY SCREW COMPRESSORS (1 DUTY + 1 STANDBY).
3. THE ENTIRE PIPING NETWORK IS CONSTRUCTED USING COMPRESSED AIR-GRADE ALUMINUM PIPES.
4. A CLOSED-LOOP RING HEADER (3" NB) ENSURES UNIFORM PRESSURE DISTRIBUTION AND REDUNDANCY.
5. ALL COMPONENTS AND PIPELINES ARE RATED FOR MINIMUM 10 BAR WORKING PRESSURE.
6. RECEIVER TANKS (1000 L) ARE CENTRALLY LOCATED AND INTERCONNECTED VIA HEADER.
7. PRE & FINE FILTERS, REFRIGERATED DRYERS, AND ACTIVATED CARBON FILTERS ARE INSTALLED IN SEQUENCE POST-TANK.
8. EACH MAJOR EQUIPMENT AND ZONE IS PROVIDED WITH ISOLATION VALVES FOR MAINTENANCE.
9. DRAIN LEGS WITH AUTO/MANUAL DRAIN VALVES ARE INSTALLED AT ALL LOW POINTS.
10. BRANCH CONNECTIONS TO FRL UNITS ARE TAPPED FROM THE TOP OF THE HEADER TO AVOID MOISTURE CARRYOVER.
11. PRESSURE IS MAINTAINED ≥6.5 BAR AT THE FARTHEST FRL UNIT UNDER PEAK LOAD CONDITIONS.

PNEUMATIC COMPRESSED AIR SYSTEM



MEP CONSULTANTS:



1st Floor, APR & MRS ARCADE,
Vijayapura Road, Devanahalli,
BENGALURU INDIA, 562110

A-SQUARE MEP Consultants (hereafter referred to as "A-SQUARE") retains all copyright and other proprietary rights to the drawings created by A-SQUARE. All drawings created by A-SQUARE are protected by Indian and international copyright laws. Any unauthorized reproduction, distribution, or modification of A-SQUARE's drawings is strictly prohibited. A-SQUARE reserves the right to take legal action against any unauthorized use of its drawings. A-SQUARE grants clients a limited, non-exclusive, non-transferable license to use the drawings for the specific project or purpose for which they were created. Clients may not use the drawings for any other purpose without the express written consent of A-SQUARE. Clients may not modify, reproduce, distribute, transmit, display, perform, publish, license, create derivative works from, transfer, or sell any of A-SQUARE's drawings without the prior written consent of A-SQUARE. Clients may not use any of A-SQUARE's drawings as a basis for the design or construction of any other project without the express written consent of A-SQUARE. Clients may not disclose any of A-SQUARE's drawings to any third party without the prior written consent of A-SQUARE. Kindly visit our web-site, to know more.

GENERAL NOTES

1. All dimensions are in millimeters (mm); follow written dimensions, do not scale.
2. Drawings must be coordinated across all disciplines; report discrepancies before execution.
3. Designs comply with NBC, ASHRAE, NEC, IPC, NFPA, and other applicable architectural & MEP standards.
4. Use only the latest issued drawings; verify all dimensions and site conditions before execution.

VERSION CHART

VERSION NO.	VERSION DATE
REF-01	09-JUN-2025
FINAL APPROVAL-01	27-JUN-2025
FINAL APPROVAL-02	02-JUL-2025
FINAL APPROVAL-03	04-JUL-2025

ISSUED FOR:

GOOD FOR CONSTRUCTION

LOCATION:

GEMINI INFRASTRUCTURE

AT SURVEY NO. 29/2, 29/4, 29/8, 30/2, & 30/3 AT
HUSKUR ROAD, VADARAHALLI VILLAGE,
DASANPURU HOBLI, BANGALORE NORTH
TALUK, NELAMANGALA-562123

PROJECT:

WEIR MINERALS PLANT-2

CLIENT:



WEIR MINERALS INDIA PRIVATE LIMITED

ISSUED DATE:

07-JUL-2025

DRAWN BY:

SK

CHECKED BY:

SK

APPROVED BY:

AA

SHEET TITLE:

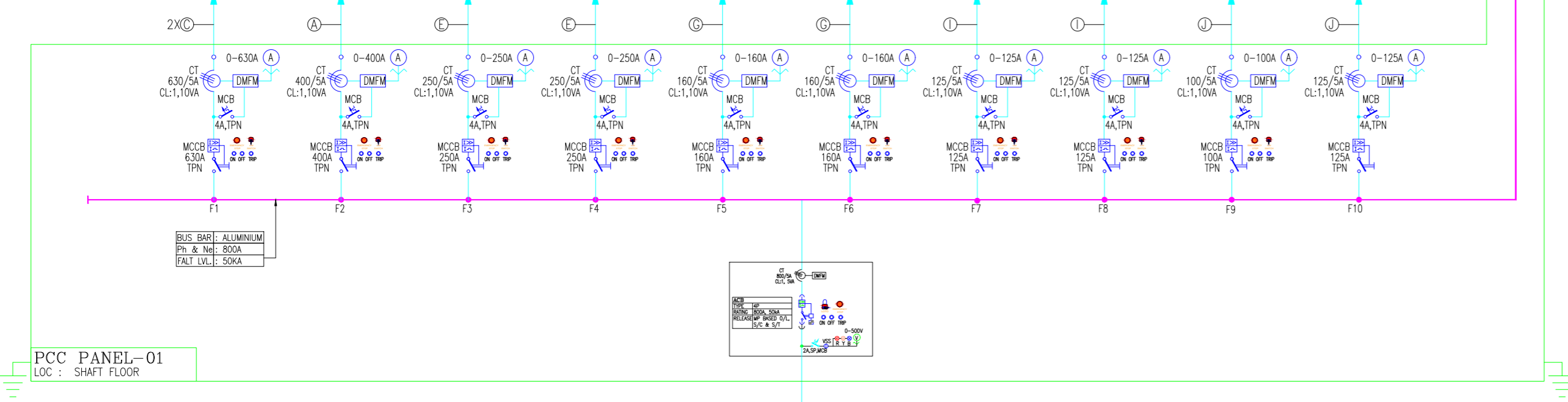
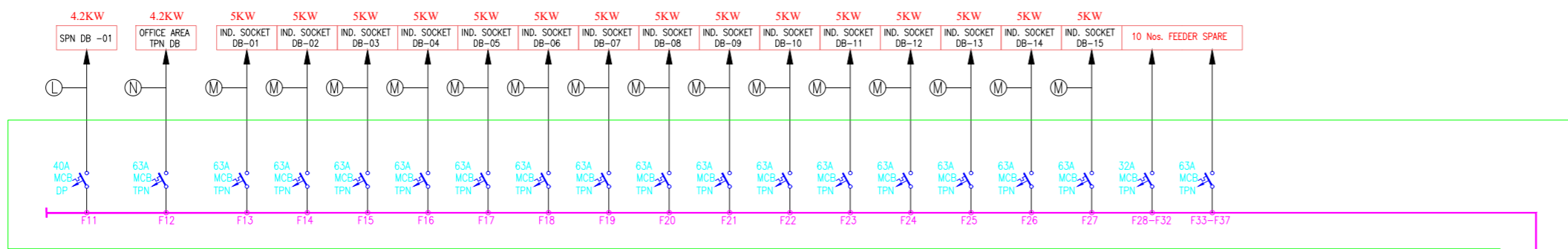
TECHNICAL DETAILS COMPRESSED AIR DISTRIBUTION

SHEET SIZE:

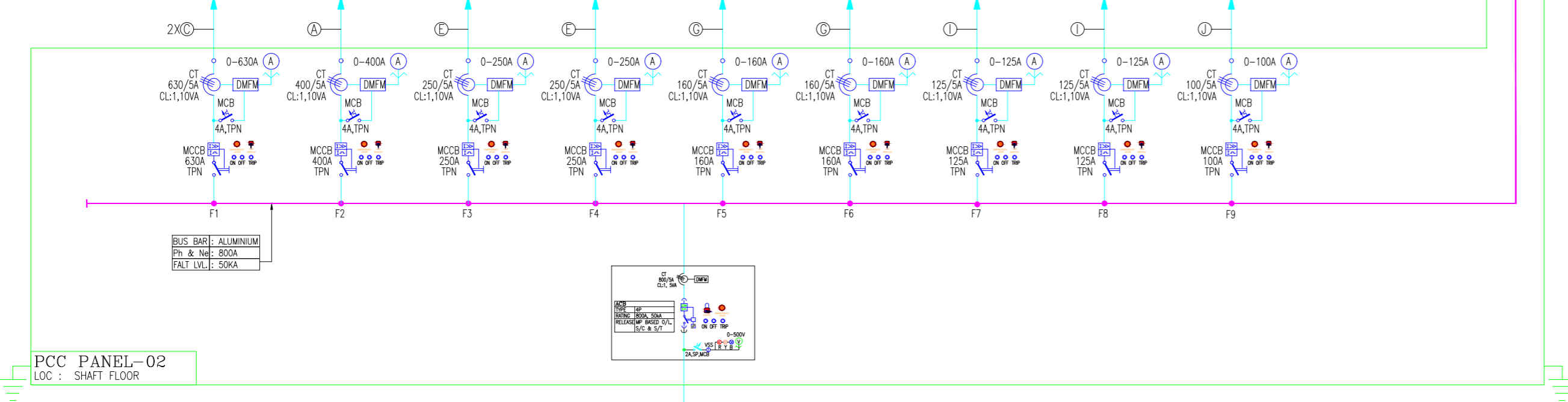
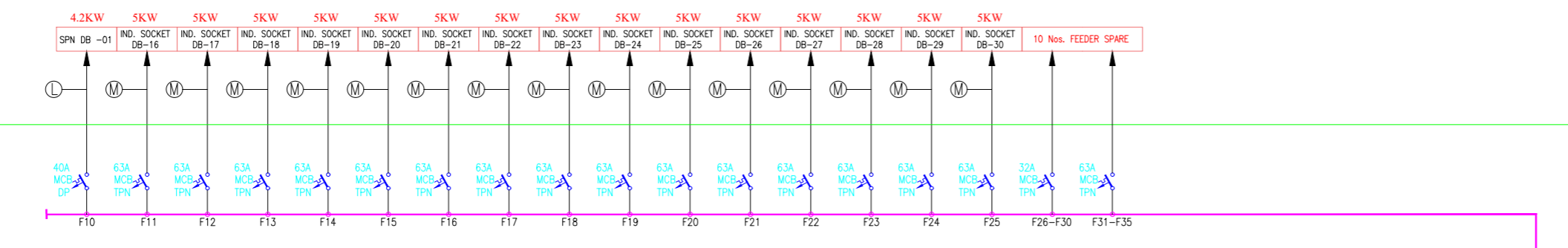
A2

DRAWING NO:

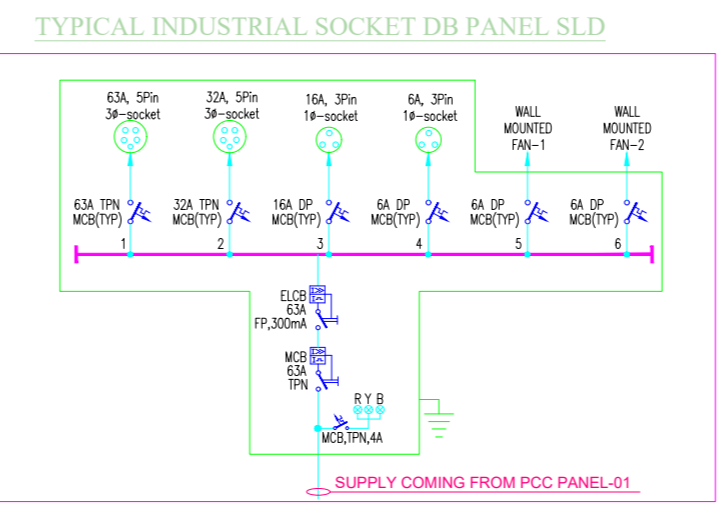
ASC-CAD-WM-002



SUPPLY FROM LT PANEL



SUPPLY FROM LT PANEL



LEGEND AND ABBREVIATIONS.

	MOULDED CASE CIRCUIT BREAKER (MCCB)
	CURRENT TRANSFORMER (CT) RESIN CAST
	VOLTMETER WITH SELECTOR SWITCH (DIGITAL)
	EMERGENCY SWITCH
	PHASE FAILURE RELAY OVER AND UNDER VOLTAGE PROTECTION RELAY (PER)
	MINIATURE CIRCUIT BREAKER (MCB)/MCCB
	INDICATING LAMP (R,Y,B)
	DIGITAL MULTI FUNCTION METER (V,I,R,KW etc.)
	AUTOMATIC MAINS FAILURE PANEL
	TIMER
	AUTO MANUAL SWITCH

CABLE LEGEND

(A)	3.5CX300 SQMM AL,XLPE,AR,CABLE
(B)	3.5CX240 SQMM AL,XLPE,AR,CABLE
(C)	3.5CX185 SQMM AL,XLPE,AR,CABLE
(D)	3.5CX150 SQMM AL,XLPE,AR,CABLE
(E)	3.5CX120 SQMM AL,XLPE,AR,CABLE
(F)	3.5CX95 SQMM AL,XLPE,AR,CABLE
(G)	3.5CX70 SQMM AL,XLPE,AR,CABLE
(H)	3.5CX35 SQMM AL,XLPE,AR,CABLE
(I)	3.5CX50 SQMM AL,XLPE,AR,CABLE
(J)	3.5CX25 SQMM AL,XLPE,AR,CABLE
(K)	3.5CX25 SQMM AL,XLPE,AR,CABLE
(L)	3CX10 SQMM AL,XLPE,AR,CABLE
(M)	4CX16 SQMM AL,XLPE,AR,CABLE
(N)	4CX10 SQMM AL,XLPE,AR,CABLE



1st Floor, APP & MRS ARCADE,
Vijayapura Road, Devanahalli,
BENGALURU INDIA , 562110

A-SQUARE MEP Consultants (hereafter referred to as "A-SQUARE") retains all copyright and other proprietary rights to the drawings created by A-SQUARE. All drawings created by A-SQUARE are protected by Indian and international copyright laws. Any unauthorized reproduction, distribution, or modification of A-SQUARE's drawings is strictly prohibited. A-SQUARE reserves the right to take legal action against any unauthorized use of its drawings. A-SQUARE grants clients a limited, non-exclusive, non-transferable license to use the drawings for the specific project or purpose for which they were created. Clients may not use the drawings for any other purpose without the express written consent of A-SQUARE. Clients may not modify, reproduce, distribute, transmit, display, perform, publish, license, create derivative works from, transfer, or sell any of A-SQUARE's drawings without the prior written consent of A-SQUARE. Clients may not use any of A-SQUARE's drawings as a basis for the design or construction of any other project without the express written consent of A-SQUARE. Clients may not disclose any of A-SQUARE's drawings to any third party without the prior written consent of A-SQUARE. Kindly visit our web-site, to know more.

GENERAL NOTES

- All dimensions are in millimeters (mm); follow written dimensions, do not scale.
- Drawings must be coordinated across all disciplines; report discrepancies before execution.
- Designs comply with NBC, ASHRAE, NEC, IPS, and other applicable architectural & MEP standards.
- Use only the latest issued drawings; verify all dimensions and site conditions before execution.

VERSION CHART

VERSION NO.	VERSION DATE
REF-01	09-JUN-2025
FINAL APPROVAL-01	27-JUN-2025
FINAL APPROVAL-02	02-JUL-2025
FINAL APPROVAL-03	04-JUL-2025
GFC	07-JUL-2025

LOCATION:
GEMINI INFRASTRUCTURE
AT SURVEY NO. 29/2, 29/4, 29/8, 30/2, & 30/3 AT
HUSKUR ROAD, VADARAHALLI VILLAGE,
DASANPURU HOBLI, BANGALORE NORTH
TALUK, NELAMANGALA-562123

PROJECT:
WEIR MINERALS PLANT-2

CLIENT:
WEIR
WEIR MINERALS INDIA PRIVATE LIMITED

ISSUED FOR:

ISSUED DATE:
07-JUL-2025

DRAWN BY: **DA**
CHECKED BY: **SK**
APPROVED BY: **AA**

SHEET TITLE:
PCC PANEL-01&02 AND INDUSTRIAL DB PANEL SLD

SHEET SIZE: **A2**
DRAWING NO: **ASC-ELE-WM-003**